



ACOS
GRAF
FÁBRICA DE MÁQUINAS GRÁFICAS, LDA.

www.acosgraf.com



GALAXY E-CLAMP



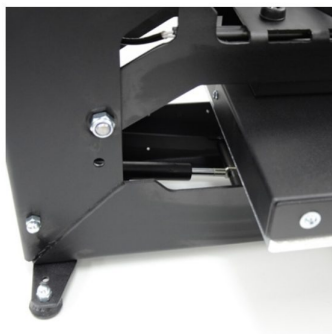
The GALAXY E-CLAMP is a manual transfer machine with angular opening. The GALAXY E-CLAMP is equipped with a transfer plate with dimensions 40x50 cm.

Note: As características podem ser alteradas sem aviso prévio



ACOS
GRAF
FÁBRICA DE MÁQUINAS GRÁFICAS, LDA.

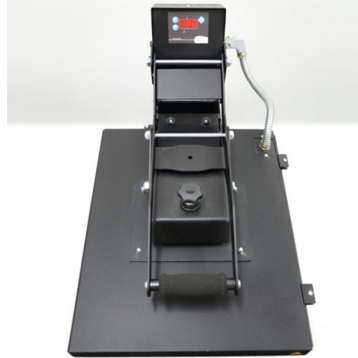
Rua do Castalhão - Canelas (Zona Industrial da Mina), nº320 4410 - 269 Canelas
VNG - Portugal P.O.Box - 45 -4408 VALADARES CODEX - Portugal
Tel. +351 227 621 679 / +351 227 621 901 - Fax +351 227 623 375
www.acosgraf.com | geral@acosgraf.com



Shock absorber to help raising from heating plate



Temperature and timer digital controlled



Pressure point adjustment by central point

PRODUCT DESCRIPTION

- Separate Digital temperature and time control;
- Digital timer to buzzer alarm;
- Illuminated on/off switch;
- Heat transfer plate - 40x50 cm;
- Wide opening area - clam action;
- Self adhesive silicone base pad;
- Fingertip pressure control;
- Manufactured and tested to comply with EC safety regulations;
- CE labelled;
- Manual supplied illustrates electrical wiring diagrams, exploded diagram and parts list;
- Full safety instructions;
- Thermal cut out on the heating element shuts off power to the elements if the temperature exceeds 260 +/- 15°C (500 +/- 27°F)

GALAXY E-CLAMP	Units	E-CL 4050
Heat Platen size	Cm	40x50
Maximum pressure apply to transfer	Kg	450
Maximum working temperature	C	220
External depth	cm	74
External width	Cm	42
External height	Cm	42
Power install	Kw	2,5
Weight	Kg	40
Voltage	V	220

Note: As características podem ser alteradas sem aviso prévio